

**Ottawa Remote Control Club
Moodie Drive Pond Rules
2025**

MAAC Approved - May 12, 2025

The following rules package must be available to all RPAS Pilots while operating RPAS at this site, either electronically or in print. Nothing in these rules relieves the RPAS pilot of their individual CAR compliance requirements.

This site is located in un-controlled airspace. All RPAS operators shall conform to the Canadian Aviation Regulations, MAAC policies and site rules contained in this document.

Administrative Rules

Site Operator Name: Ottawa Remote Control Club (ORCC) (#94, Zone G)

Site Name: MOODIE DRIVE POND

Location: 3760 Moodie Drive, Ottawa, ON

Pilot Station Coordinates: 45 13' 23.76"N, 75 46' 29.99"W

Site Contact(s): Mark Winstanley, MAAC 24925, pond site coordinator
Rusty505050@gmail.com, (613) 552 2054

Conditions for Use - All persons using this modelling site must:

1. be MAAC members in good standing.
2. be members of ORCC, or an invited guest and
3. agree to follow the MAAC Safety code and all other site rules.

Any MAAC member attending an Event at this site must agree to attend any modeller briefing, or otherwise read and follow all site/Event rules. The site operator is responsible to take reasonable steps to ensure a modeller briefing occurs for each modeller using the site.

Site Administrative rules

1. All Vehicles are to be parked in the designated parking area
2. No garbage is to be left. If you bring it, take it home with you.
3. Spectators must remain in the spectator designated area just outside the club trailer.
4. Pets to be kept on leash
5. Children to be supervised at all times
6. There are no toilet facilities provided at this site
7. A set of these rules is kept in the Club trailer. Visiting pilots must review and agree to abide by these rules. The rules will be reviewed periodically and updated by the Club executive. An up to date copy will be posted in the club trailer. The definitive club rules are available on the MAAC.ca web site. Any

printed copy may be out of date. Always check with the MAAC web site for the latest version of the rules.

Site/event emergency response requirements

In the event of an emergency, call (9-1-1 or phone number) - the site address to be provided to first responders is:

3760 Moodie Drive, Ottawa, ON.

(Advise first responders site is located on the east side of Moodie Drive).

1. A Fire extinguisher is located in the club trailer
2. A first aid kit is located in the club trailer

Modelling Rules

MAAC Approved Modelling Categories

The following categories of MAAC modelling are approved at this site/event. In addition to the MAAC Safety Code, there may be site specific rules contained in this document.

Approved Category	Weight/Power Limits	Altitude/operating limits
mRPAS	Less than 250 grams	400'agl
RPAS	25kg or less	400'agl
Tethered (Control-Line)	Not Approved	
Free flight		
Space Models		
Surface Vehicles	35 kg/ electric only or unpowered boats /max power 6s Lipo @50 amps	

MAAC Approved Site Add-ons

This site has not been approved for any MAAC add-ons.

Approved Add-on	Weight/Power Limits	Altitude/operating limits
RPAS Weight (25-35kg)	Not approved	
RPAS Altitude		
RPAS Altitude and Weight >25kg		
RPIC		

RPAS/Model technical specifications or requirements or restriction

1. mRPAS requirements –mRPAS cannot be registered with Transport Canada. mRPAS are however regulated under CAR900.06 and part VI of the CAR. Compliance with MAAC safety code meets those requirements. mRPAS at advertised events must comply with the MAAC Event SFOC.

2. RPAS CAR requirements – MAAC will specify as required - There **either** are **no** special CAR restrictions on RPAS models
3. Club/Site/Event requirements – None
 - a. All internal combustion engines over .049 cu.in. (0.8cc) must be equipped with a muffler
 - b. Pilot stations are located along the shore line

RPAS Pilot/operator qualifications or requirements

1. mRPAS requirements – mRPAS do not require an RPAS operators' certificate however are regulated under CAR 900.06 and part VI of the CAR. Except for Advertised Events, there are no MAAC or CAR age restrictions on mRPAS flight.
2. RPAS Pilot CAR requirements. All RPAS pilots using this site must have a minimum of a BASIC Transport Canada RPAS certification.
3. Club/Site/Event requirements. None

CREW qualifications or requirements.

1. mRPAS requirements - mRPAS do not normally require crew under the CAR.
2. RPAS CAR requirements - Visual Observer are optional.
3. Club/Site/Event requirements – During events spotters may be required (See MAAC definition of and duties for spotters).

Crew Rules

Visual Observers

1. Visual observers (VO) are mandatory for RPAS operations above 400'agl, RPAS events open to the public or where specified by MAAC. However, the use of visual observers to alert pilots to presence to full sized air traffic is strongly encouraged. When required at this site, no member shall operate an RPAS unless:
 - a. A visual observer(s) is present who has been briefed or trained on any site/event procedures upon spotting a potential conflict with full-scale aircraft.
 - b. A minimum of one visual observer per flight line is required.
 - c. VO must not watch the models – their sole role is to scan the surrounding sky for approaching full-scale aircraft.
 - d. Position the VO where they have unobstructed sight lines – sitting in the shade beside a camper/structure is not acceptable. Equally they must be situated to have a reasonable communication ability with all pilots/modellers.
 - e. Use visual aids as required – sunglasses, wide brim hats, sunshades, binoculars or similar. If positioned far from pilot stations, provide suitable notification means such as air horns, lights, radios etc.
2. Per CAR (901.23(vii)) each site must have rules to ensure a clear full-scale detection and avoidance command/response protocol is in place – there is no time for debates or confusion. MAAC has adopted the following minimum:

- a. **MAAC models/RPA shall give way/get out of the way of full-scale aircraft in all circumstances – no exceptions. There is never any onus on full-scale pilots to yield to models – ever.**
- b. Upon spotting/hearing or being advised of any airplane that might pose a hazard with modeling activities, the VO or any other person on site, shall yell in a loud clear voice “AIRPLANE”. **If in doubt, issue the warning.**
- c. Upon hearing this command, all pilots shall descend to as low as altitude as safely possible, and if required land. The goal is to vacate the airspace vertically and then determine if RPA can continue to operate safely.
- d. **Lateral deconfliction maneuvers are prohibited above 60’AGL.** Descending to 60’agl (tree top level) is the accepted Transport Canada initial response. Members operating near/off aerodromes have different specific response requirements.
- e. Upon determining the full-scale aircraft is no longer a threat, the VO or other persons shall yell in a loud clear voice “ALL CLEAR”.
- f. If any "official person" such as a peace officer, ATC or their delegate, has given a stop flying order, guidance or similar, all model flying **shall** stop immediately and shall not resume until permission to do so is obtained from person or body that issued the stop flying order.
- g. Thereafter modeling activities may resume as normal.

Program Director, Air Boss, ATC Coordinator

This site is in uncontrolled airspace – a Program Director or an Air Boss is not required

RPIC – RPAS Pilot in command

Not approved

Instructors/Demo flights

As of April 01, 2025, non-RPAS certificate holders can manipulate the controls of an RPAS in any airspace scenario, if under the direct supervision of a properly certified RPAS pilot.

Training may be accomplished at this site by club instructors or persons deemed qualified by the club CFI.

Spotters

Spotters are not usually required at this site but are recommended. Spotters should stand with which pilot they are spotting for. Duties include:

- Observing air traffic
- Advising pilot of other pilot instructions
- Looking out for bystanders

Airspace requirements or permissions

This site is in uncontrolled Class G airspace.

The nearest airspace laterally is Ottawa (CYOW) Class C control zone located 0.53 nm northeast of pilot stations.

The nearest controlled airspace vertically is Ottawa TCA Class at 1500'MSL (1165'AGL)

Site elevation is 335'MSL (102m).

Adjacent Aerodrome Procedures (within 3nm)

There are no aerodromes within 3nm of this site, therefore MAAC see and avoid procedures are deemed adequate for aviation safety.

Ottawa/MacDonald Cartier International airport (CYOW) is 7.53nm northeast of this site.

Normal mRPAS/RPAS/model operating procedures

1. Prior to daily operations, an RPAS Wilco site survey shall be consulted. MAAC endorses the use of a single shared RPAS Wilco site survey provided:
 - a. A new site survey is conducted/checked at least once every 56 days (NAV CANADA schedule), and if there are changes the updated site survey is made available to all members.
 - b. All site survey information is readily available to all RPAS pilots on site (electronically or in print).
 - c. Prior to each flying session, members must check Aviation NOTAM for critical flight safety information, or changes to airspace or aerodromes. Members may share NOTAM information verbally or in print with other members at the site.
 - d. Members must confirm there are no changes to site layout affecting distances to unsheltered bystanders
 - e. Members must each visually confirm no changes to site obstructions, local obstacles and that weather conditions stipulated in any MAAC requirements are met.

NAV CANADA 56-Day Publication schedule - ensure you complete a new RPAS Wilco Site Survey on these dates:

2025	2026	2027	2028
20-Feb-25	22-Jan-26	18-Feb-27	20-Jan-28
17-Apr-25	19-Mar-26	15-Apr-27	16-Mar-28
12-Jun-25	14-May-26	10-Jun-27	11-May-28
07-Aug-25	09-Jul-26	05-Aug-27	06-Jul-28
02-Oct-25	03-Sep-26	30-Sep-27	31-Aug-28
27-Nov-25	29-Oct-26	25-Nov-27	26-Oct-28
	24-Dec-26		21-Dec-28

2. The MAAC mandated minimum weather conditions to commence or continue MAAC RPAS operations are:
 - a. no cloud ceiling (broken or overcast sky) **estimated** lower than 1000'agl if the site approved altitude is less than 400', or no cloud ceiling **estimated** less than 1000' above any higher site approved altitude, and
 - b. the RPA will be able to remain 500' vertically and 1 sm (statute mile) horizontally clear of any cloud, and
 - c. an **estimated** horizontal visibility of 3sm (5km) or more around the flying area, and
 - d. no other obscuring conditions (fog, smoke, haze etc.) which could make spotting full-scale aircraft difficult.

NOTE – RPAS pilots may estimate cloud ceilings and visibility, provided they do so in good faith understanding the purpose of weather limits is to ensure we can see approaching full-scale aircraft.

3. Each RPAS pilot is responsible to ensure the following MAAC procedures and requirements have been met prior to commencement of any RPAS operation:
 - a. Any required MAAC manufacturer declaration provisions have been met, including all RPAS technical specifications verified, pilot and crew requirements, and
 - b. All RPA and required equipment have been maintained and all mandatory actions completed before the flight, in accordance with the manufacturer declaration and
 - c. all paperwork such as pilot declarations, required operating manuals or similar is present, and
 - d. That any required crew members are properly qualified, have made any required declarations and are briefed on the operation.
4. Members shall not operate an RPAS at night unless it is brightly lit, weighs less than 25kg, and remains below 400'agl. Members shall use the weather channel time to determine legal night.
5. Pilots may fly in formation provided they agree to do so.
6. Refer to the attached map for normal site set-up areas such as spectator areas, pit, or assembly areas, and start-up/run-up areas.
7. MAAC required buffer distances are variable and at this site are:
 - a. 7m from flight line to pilot stations, 10m from flight line to pits, and 30m from flight line to spectator and parking.
 - b. No flying when site maintenance is underway.
8. All models will be assembled in the pit or designated assembly area. Unpowered testing of controls and failsafe may occur here as well. All powered testing must occur in a start up area.
9. All models, including electric powered models, will be restrained before being tested, armed or started in the designated startup areas.
10. Refer to the attached map for a depiction of the flying area, including no-fly zones, a description or depiction of the flight line, safety line, runways, taxiways, and any other pertinent flying area demarcation.
11. The following are the site take-off, approach, landing and recovery procedures:

- a. Pilots, or their spotter, shall call out all model movements.
- b. Hand launching and bungee launching shall be done in agreement with any pilots flying – normally off to one side of the pilot stations.
- c. Pilots shall take off into the prevailing winds, or otherwise in agreement with all pilots flying.
- d. No person shall proceed past abeam the pilot stations without permission of other pilots flying.
- e. The recovery of downed models in the flying area shall not be done without the agreement of all pilots flying. Thereafter no new models may take-off until the downed model is recovered. No flying directly over the recovery crew.

Non-RPAS Normal Modelling procedures

Model boats may be operated on the pond when aircraft are not in operation.

Surface Vehicles (boats) model operations

1. No boat operation is permitted while RPAS operations are underway.
2. All boats are to be operated within the declared "flying area"
3. While the RPAS RC recovery boat or manned recovery boat is operating all other boat activity is to cease
4. Boat operators shall operator from the shoreline RPAS pilot stations.
5. Operate surface vehicles at night is not permitted. Members shall use the weather channel time to determine legal night.
6. All models, including electric powered models, will be restrained before being armed or started in the designated startup areas.
7. Operation of model boats is not allowed if there are swimmers or boats in the the water. Stop and wait for them to move clear.

Emergency Procedures

Fly-away or lost link.

RPAS pilots are required to know who to notify in the event of a RPAS fly-away outside our MAAC approved flying areas **which could reasonably enter** the nearest controlled airspace volume. Note this process is not required for temporary flight immediately outside the MAAC approved flying area, or for known crashes/off site "landing" outside the MAAC approved flying area.

1. If you experience a RPA fly-away, and in your judgement as the RPA pilot in command (including RPIC scenarios) the RPA has sufficient energy or capability to fly to and enter the identified controlled airspace volume (either laterally or vertically, or both), you are legally required to attempt contact with listed agencies below and advise them of the fly-away situation.
2. MAAC has assessed this site and determined the following:

This site is wholly in uncontrolled airspace. The nearest controlled airspace volume is

- a. Laterally

Nearest Controlled Airspace – Fly-away - Laterally				
Altitude	Name, Class, Type	Distance and Direction	Altitude	Contact Info
Below 400'	CYOW Class C CZ	2600' NE	SFC-2600msl	613-248-3814

b. Vertically

If you experience a fly away while operating at higher altitudes (above 400'), or if the model is climbing uncontrollably and in the pilot in command's judgement may enter overlying or adjacent controlled airspace, contact the listed agency as soon as possible.

Nearest Controlled Airspace – Fly-away - Vertically				
Location	Name, Class Type	Based at	Other	Contact Info
Over site	CYOW Class C TCA	1500'msl		613-248-2200

Incident Accident

1. If there is any type of near miss or safety concern between a full-scale aircraft, bystander and our RPA/models, **ALL FLYING/MODELLING** SHALL cease immediately. The members involved should fill out a MAAC reportable occurrence report and submit that to MAAC and the Site/Event organizer and follow MAAC policy.
 - a. If the member(s) involved believe the risk was very minimal, they may complete their own self declaration or risk assessment using the MAAC form. Submit a copy of the form to the Site/Event organizers when able and recall if this involved RPAS you must keep this form for one year (CAR901.49 (2)). Resume flying/modelling when done.
 - b. If the member or Site/Event operators deems the event serious, flying/modeling will not resume until members are given permission by the Site/Event organizers – in writing.
 - c. If there is physical contact between a full-scale aircraft, a by-stander, a spectator and a MAAC RPAS/model – all flying/modelling will cease until MAAC confirms you may resume operations.
 - d. This process is for **your** protection.

Transportation Safety Board (TSB) Protocols

1. In addition to MAAC reporting requirements, according to TSB Regulations and policies, RPAS occurrences shall be reported to the TSB to 819-994-3741 or 1-800-387-3557 as soon as possible after the occurrence:
 - a. if an RPA with a MTOW (maximum take-off weight) greater than 25 kg is involved in an accident as defined in 2(1)(a) of the TSB Regulation;
 - b. if a person is killed or sustains a serious injury as a result of coming into direct contact with any part of an RPA, including parts that have become detached from the RPA; and
 - c. if a collision occurs between any RPA and a traditional aircraft.

A full report shall be forwarded to the TSB within 30 days of the occurrence:

<https://www.tsb.gc.ca/eng/incidents-occurrence/aviation/index.html>

Model damage/repair protocol

1. In the event of any normally expected modelling mishap which requires any degree of repair, the model may only be "field repaired" if all normal modelling supplies and tools are present and used in accordance with established modeling practices or manufacturer instructions.

- a. Any repair other than minor (replacing broken propeller etc.) shall be treated as a maiden flight/operation. Ensure RPAS logbook entries are made.
- b. Any repair that cannot be fixed at the field, shall only be repaired at the modellers/owners shop or other repair facility. Ensure RPAS logbook entries are made.

Service Difficulties

A service difficulty is defined as any condition that affects or that if not corrected, is likely to affect the safety of aircraft or any other person. As MAAC has made a safety assurance declaration to Transport Canada that is used in many of our RPAS flying privileges, it is critical and a regulatory requirement MAAC is informed of any issues related to our safety assurance declaration. Bear in mind MAAC has fully adopted a Just Culture and will not penalize or discipline members for reporting safety concerns, not matter how large or small, when done in good faith.

1. If a mRPAS or an RPAS is being operated under any manufacturer declaration (MAAC or other), the RPAS pilot shall ensure, without delay, a report is filed with the manufacturer if they encounter any of the following:
 - a. Any inability to meet the position determination standards (Standard 622) associated with the manufacturer declaration, related to equipment or the performance of equipment.
 - b. Any failure of a critical command and control component not attributable to normal wear and tear or obvious misuse (example dead/low battery), and
 - c. any other aspect of RPAS operation where the safety assurance declaration was not met.

MAAC Add-ons

RPAS Operations Above 400'AGL - not approved

RPAS Operations Above 25kg - not approved

RPAS Operations Above 400'AGL and Above 25kg - not approved

RPAS Pilot In Command - not approved

Event Approval

1. ALL MAAC events that require approval or want MAAC insurance must occur at SOC sites and be approved by MAAC. All outdoor events with operable RPAS must be approved by MAAC.
2. **Outdoor events that are clearly listed as “member-only” events** (regardless of reason such as competitions, fun-fly's, fly-in's, airshows, air racing, demonstrations or any other organized gatherings) do **not** require MAAC Event SFOC compliance. **All advertising/notice including internal to MAAC must include the following phrase:**

This event is closed to the public - only MAAC members and crew may attend. Invited guest(s) of a MAAC member are permitted provided they are supervised.

3. **“Advertised events”** - regardless of what you “named” your event, if your outdoor event includes operable (flying) RPAS **and** is open/advertised to the general public in any fashion, **must** meet the MAAC SFOC requirements. All advertising/notice, including internal to MAAC **must** include the following phrase:

This event is open to the public and all MAAC members, crew, and their invited guests. MAAC Event SFOC compliance is required.

Foreign RPAS Pilots (US or other)

MAAC has already obtained Transport Canada approval for foreign RPAS pilots to operate RPAS at our MAAC sites and events (Policy approved July 2023). Foreign pilots must join MAAC and follow the provisions of MAAC policy (on the website). Also see the RPAS Wilco NOTAM (2024-02).

Events with RPAS operations above 400'agl and/or weighing more than 25kg - not approved

The following are the normally expected process and rules for an event.

1. The club/event organizers shall:
 - a. Prior to submitting an event approval application, ensure they have read all MAAC policy and have submitted an event package indicating they have complied as best as possible.
 - b. Ensure the site meets all MAAC event organizational and logistic requirements such as signage, parking control, spectator safety barriers, washroom and food provisions, and fire/medical safety requirements commensurate with the expected attendance.
 - c. Ensure the event complies with MAAC event policy and any CAR or SFOC requirements.
 - d. Ensure all attending modellers/RPAS pilot are **current MAAC members**.

- e. Take reasonable steps to ensure all attending modellers pilots **receive a briefing** on site or event rules using the MAAC minimum checklist (attached).
2. In addition to all the above and the club rules, at any event where the public is in attendance under the MAAC SFOC, the event organizers are responsible to ensure:
 - a. MAAC warning signs are posted at all public entry points.
 - b. A copy of the MAAC SFOC and application are on site and available to all RPAS pilots.
 - c. All RPAS pilots sign the Transport Canada sign in sheet.
 - d. All RPAS pilots receive a briefing on site rules using the MAAC minimum checklist (attached).
 - e. A visual observer is always present when RPAS are flying.
 - f. Ensure all follow up actions are completed after the event, most notably any Transport Canada paperwork.
 3. Any member attending an event shall
 - a. Comply with all CAR, SFOC, MAAC and club/event rules as required.
 - b. Not operate a model or RPAS unless they attend or obtain a pilot briefing.

Diagrams/maps

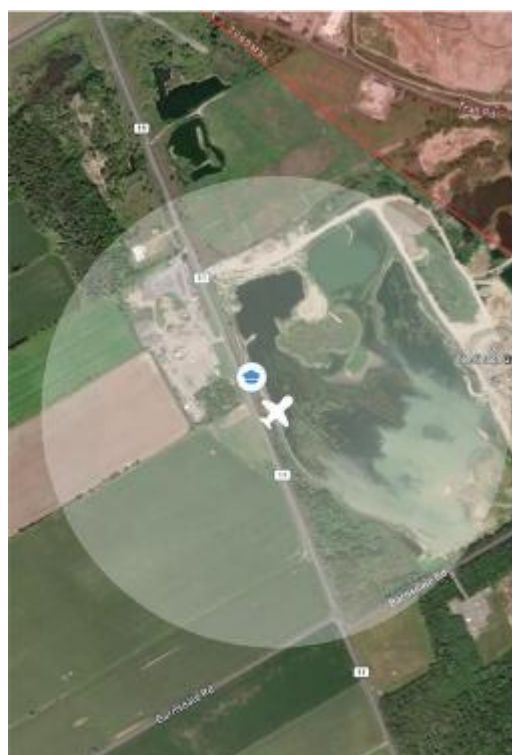
Site set-up diagram.



Site Flying area diagram.



Airspace MAP.



WARNING!



**AEROMODELING
MAY CAUSE
SERIOUS INJURY!**

**PROCEED AT
YOUR OWN RISK!**

AVERTISSEMENT !

**L'AÉROMODÉLISME
PEUT CAUSER
DES BLESSURES GRAVES!**

**PROCÉDEZ À VOS PROPRES
RISQUES!**